

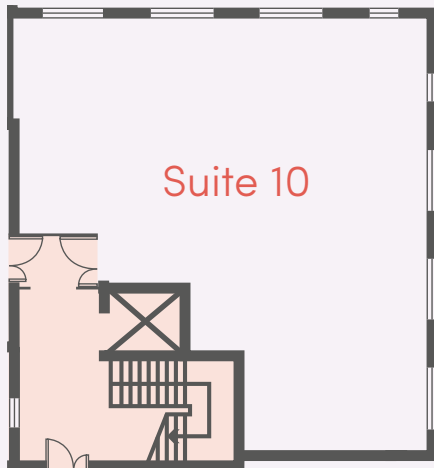


**JASON HOUSE**  
Horsforth

TO LET

**Suite 10 - 560 sq ft (52 sq m)**

indicative image



Suite 10

## Specification

The suite will be comprehensively refurbished and benefit from the following:

- Gas fired central heating
- Modern suspended ceiling
- LED lighting
- New carpeting
- Excellent natural light
- Newly decorated
- 3 - compartment perimeter power trunking

### EPC

The suite will be reassessed once the refurbishment is complete. Further information can be obtained from the agents.

### TERMS

The suite is available by way of a new effective Full Repairing and Insuring lease for a term to be agreed. Further details available on request.

### PARKING

There are 2 parking spaces allocated with Suite 10.